

Design and Construction 2024

Brief

About us

Services

We're a team of makers, thinkers, explorers. We work on projects of all shapes and sizes, but we've earned a reputation implementing turn-key creative solutions on rapid timelines. Structura Concept's experience brings a depth of knowledge and expertise that goes beyond construction. Whatever the project - large or small - we cover the entire process: from concept, planning permission and design to recognizing and resolving all the complexities of modern construction work - and to dusting off the furniture at the end!

We see our architectural and construction skills as tools for understanding the needs of both Client and end user, and as the means to turn vision into reality. Each assignment is an opportunity to enrich our lives with new possibilities and greater comfort by exploring new opportunities together.

Values

'Structura Concept' insists on applying a value-based approach. This has proved its worth time and again, stimulating greater creativity and allowing its integration into the construction process whenever it benefits the interests of all parties in the project. Architectural design has always been challenged by tight budgets – for good reason – but all too often, deadlines and designs tend to serve the interests of construction firms rather than focus on the enduring values of useable space and an agreeable built environment.

Process

Structura Concept's approach is to understand our clients needs and respond to them both efficiently and creatively, searching for any opportunity for improvement at all stages of the process. This close collaboration with the Client results in an organisationally, architecturally and technically sound response to a clarified hierarchy of needs, leading to a construction project with a natural 'feel' and a pleasing expression.

General

Info

Company Name: **STRUCTURA CONCEPT doo**
Location of Headquarter: **Južni bulevar 84, Belgrade**
Website: **www.structuraconcept.com**

Specialities: **Industrial facilities (incl. administrative part), Logistic and warehouses, Commercial/Office buildings, Hotels**

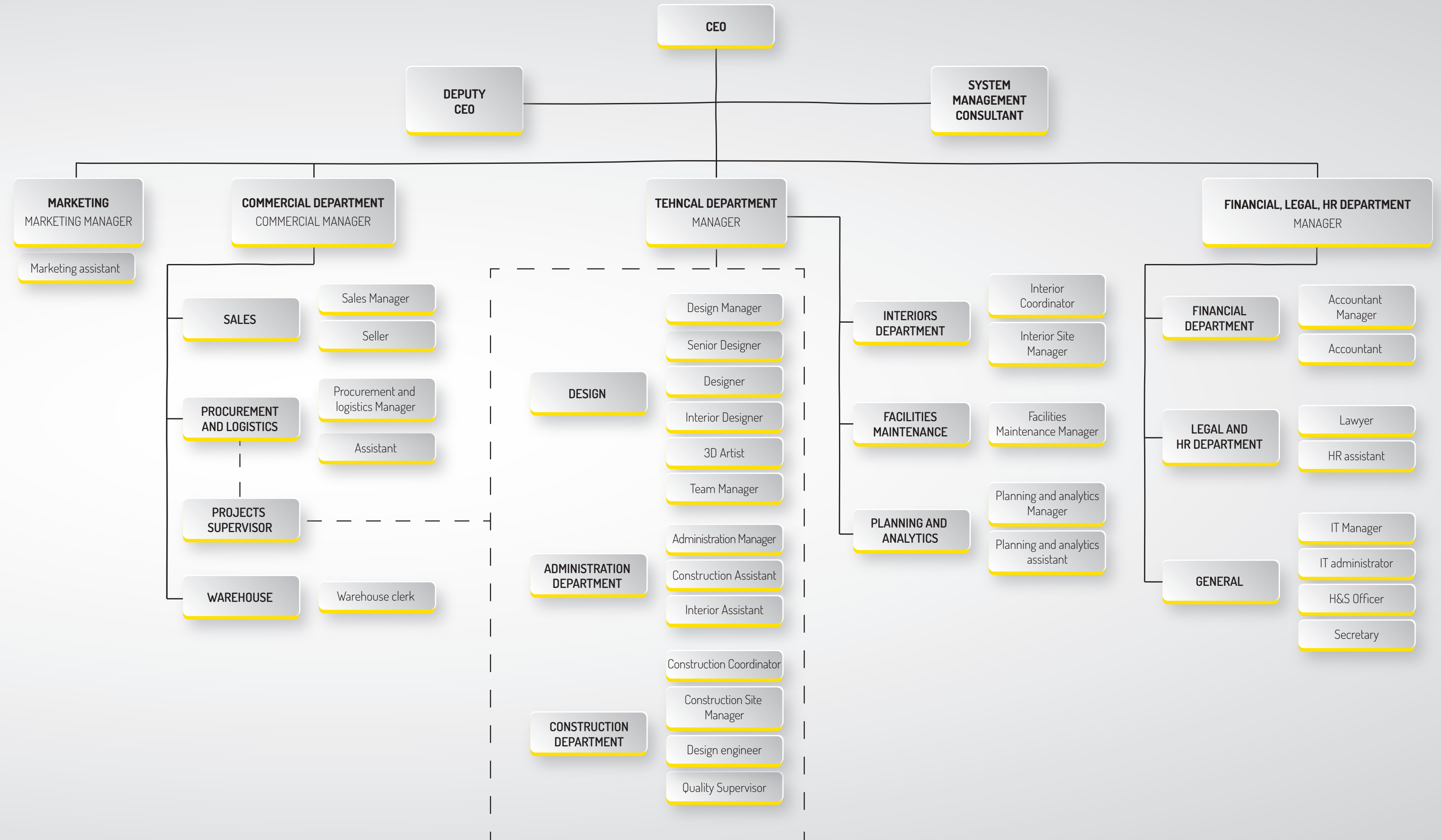
Year of Company foundation: **2017 (previously as Studio Structura, from 2010)**
Years of experience: **13**

Number of permanent employees:
Engineers: **70** Administration: **10**

Company experience:
Basic / Preliminary Design
Application Engineering / Design
Construction and Execution Design
Construction Management and Site Supervision Service
General Contractor - unit price based, FIDIC, turn-key contracts

Organization

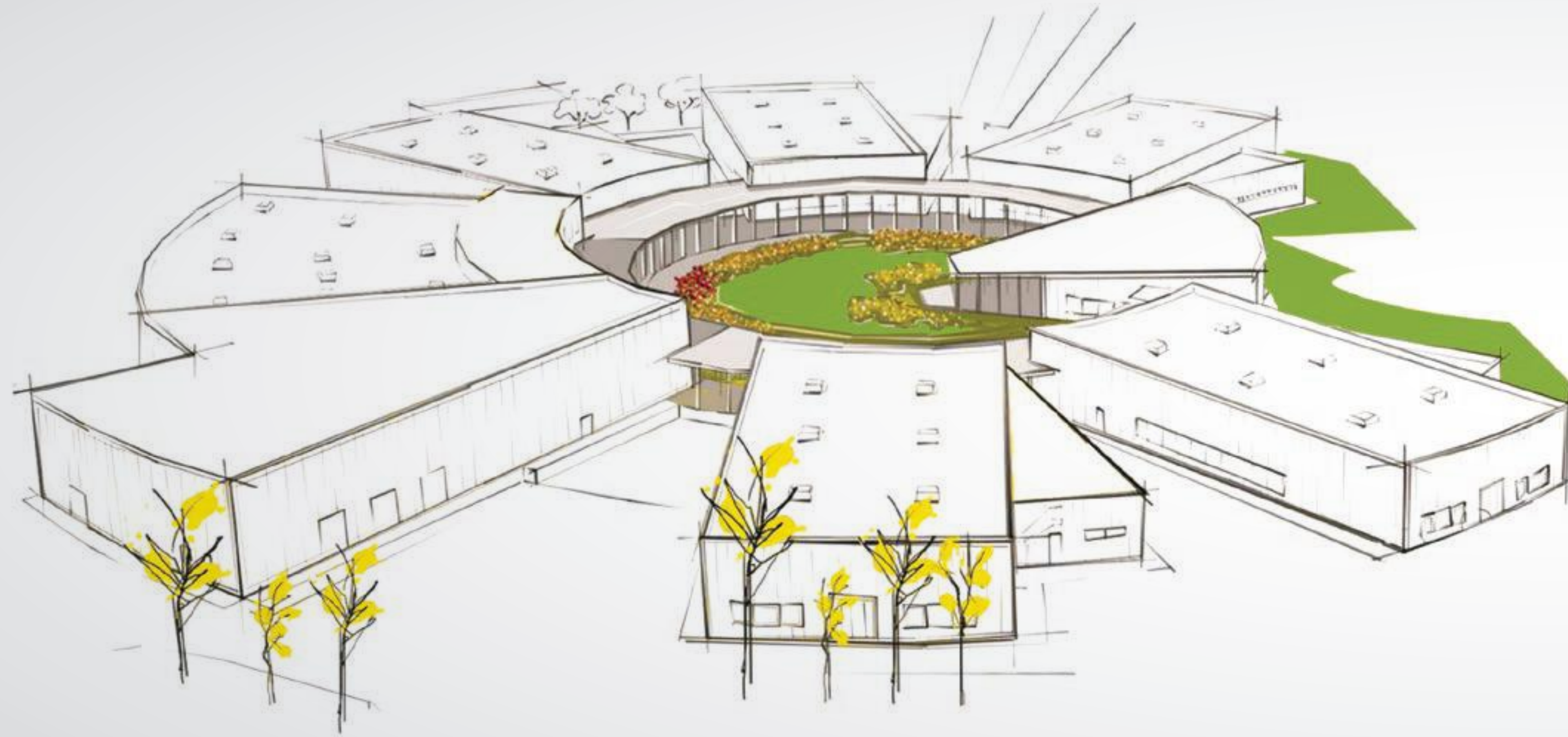
Chart



Department

Design





Structura Concept's approach simplifies and brings greater efficiency to the whole process of communication between the various consultants on the project. It prepares the ground for a seamless transition from design to construction. This is further stimulated by bringing in possible contractors as valuable participants in the design process at an early stage, adding a dimension of greater financial security to the design.

In the course of programming and design, our Clients are presented with a realistic vision so that the construction phase becomes the natural next step.

Department

Construction





'Structura Concept' bring a relentless focus to the priorities that each client needs from their construction project. Everything we do is designed to help you realise your investment whether is industrial, residential or commercial property. People are at the heart of our business and everything is focused on doing the best for them and on building lasting relationships. This includes our team, our subcontractors, and most importantly of course - you, the client.

Copyrights

Certificates

ISO 9001 certification of quality management systems
ISO 14001 certification of environmental management
ISO 45001 certification of health & safety management



A certificate that is a prestigious symbol of success and reliability of a company in the market. Apart from the business premises of your company, this internationally recognized brand of business excellence adorns only 3.6% of companies from the region that have managed to achieve and, which is much more difficult, maintain the highest credit ratings in the last three years.



Reference

Map



Selected references

List

Design and Construction

INDUSTRIAL COMPLEX Sombor
MOTHERSON Čuprija
HUTCHINSON Ruma
CTP GAMMA PHASE II Novi Sad
PERUTNINA PTUJ Bačka Topola
FEKA AUTOMOTIVE Čuprija
BLACK&WHITE Zemun
DAG&CO Ruma
LSD Zemun
CAMINADA Subotica
COMMERCIAL BUILDING Zemun

DFE and Construction

CTP GAMMA PHASE I Novi Sad
CTP RHO Novi Sad
GRAND HOTEL Kopaonik
CENTRAL POINT HOTEL Belgrade
GORENJE Valjevo
KIA&VOLVO Zemun
SIEMENS Kragujevac
SIEMENS II Kragujevac
FENESTRA Zemun

Design

CASA MAIAC Kosmaj
SAVACOOP Novi Sad
FILM COMPLEX Pančevo
OFFICE BUILDING Novi Beograd
INPUT Zemun
TEHNIX Belgrade

References

Design and Construction

Industrial Complex

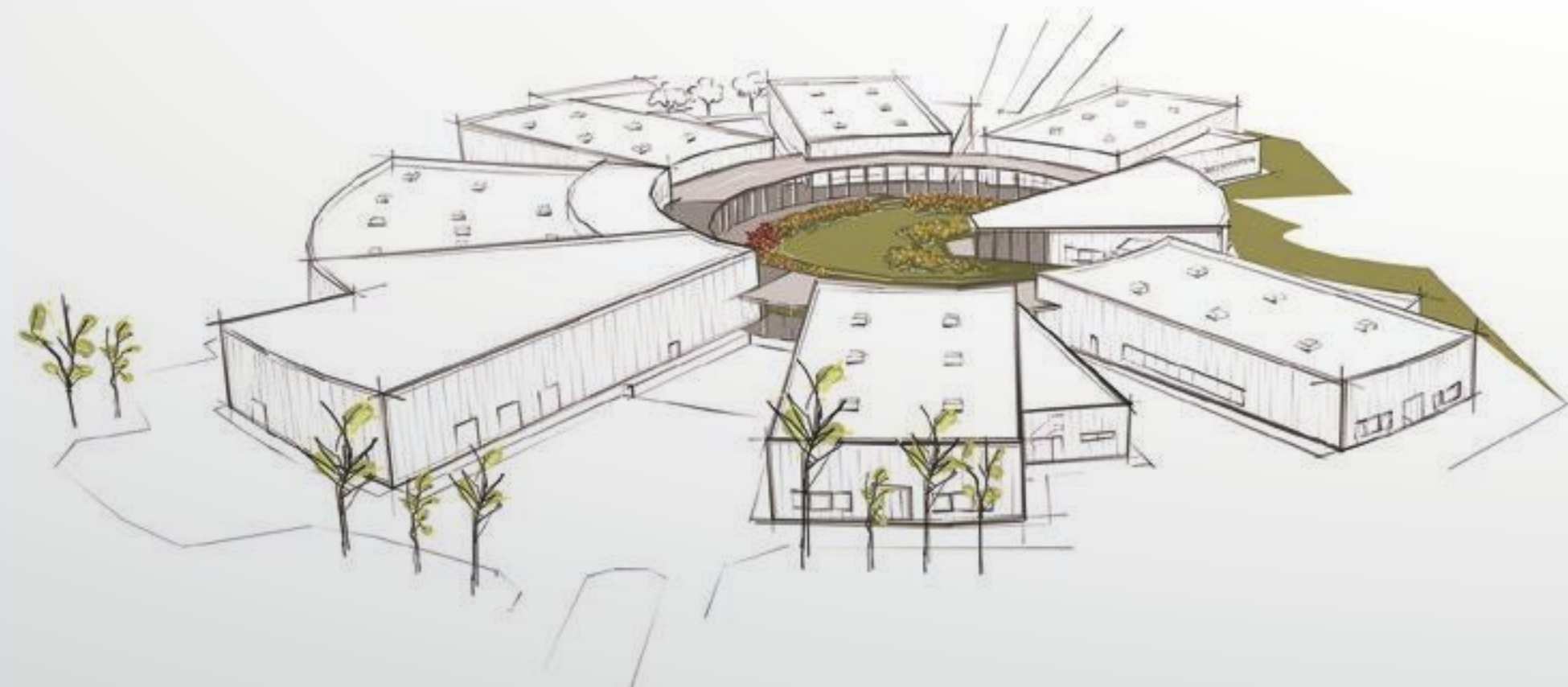


In the world of industrial architecture in our country, you rarely come across surprises: architecture and structures of new and different strength and expression. But when you find yourself in front of one, it immediately grabs your attention with its contrast with the background, a background with which it has nothing in common except its function.

In its unpredictable search for expression, modern architecture can come to solutions that shrug off the basic classical components and approach to design. This is how the industrial complex in Sombor justified this approach in which it was not enough for the architectural form to just follow function. It needed more. There was a need to elevate form into joy and satisfaction. The result was a complex of playful, rhythmic white structures rising from the spacious green carpet of the Pannonian plain.

STRUCTURA CONCEPT

Designer M.Sc.A. **Danijela Milojević** and M.Sc.A. **Jelena Petrov**
Project Manager M.Sc.C.E. **Branislav Košarčić** and M.Sc.C.E. **Slobodan Radojčić**

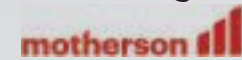


Project task **Design & Construction**
Type of building **Industrial facility**
Project timeline **2022/2023**
Location **Sombor, Serbia**
Area **10000 m²**

This dynamic set of architectural diversity tells a tale of structural complexity and artistic refinement. The unusual concept of the complex is a product not only of the creator's imagination and constant search for new architectural solutions, but also of solutions to several particularities of the location. Pressed by the limitations of the construction lines and the handicap of a city installation corridor intersecting the site, the designer was looking for a solution that would give the complex the strength to find its place and the vitality to stand the test of time.



Motherson



How can we harmonise modern production technologies and modern construction techniques with traditional principles and values that have been applied over the course of centuries of history? The answer to this question can be found in a new complex for the production of automotive interior parts. Covering some 25,000 m² in the Dobričevo industrial park close to Čuprija, it consists of a production hall with an administrative section and accompanying infrastructure. What makes this building special is the application of the Vaastu principle of design, construction and exploitation. The ancient Vaastu science was created around 5,000 years ago in what today is India. It recognises subtle and powerful influences of nature as an integral part of our immediate surroundings. Vaastu means 'the art of building in harmony with nature'. The Vaastu science and art of protection and healing help to alleviate or neutralize nature's negative influences and to strengthen the positive ones wherever we live and work.

STRUCTURA CONCEPT

Designer M.Sc.A. **Dragan Štetin**

Project Manager M.Sc.C.E. **Petar Živanović**



Project task **Design & Construction**

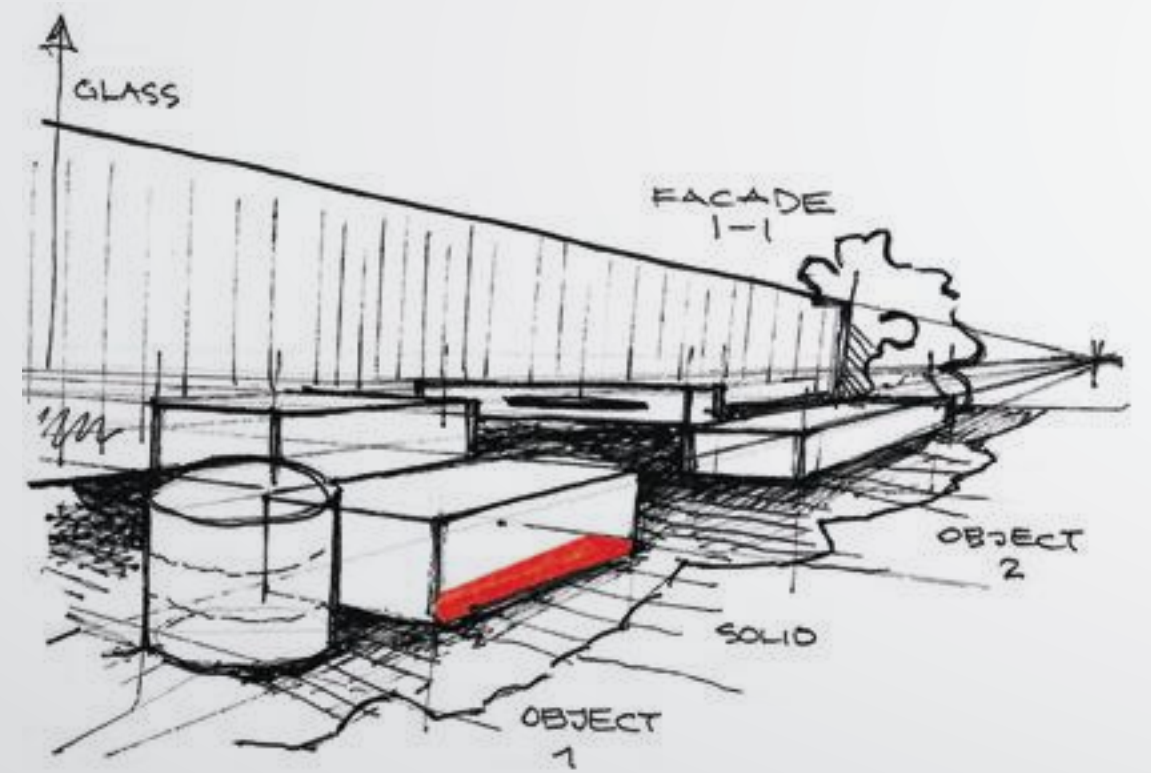
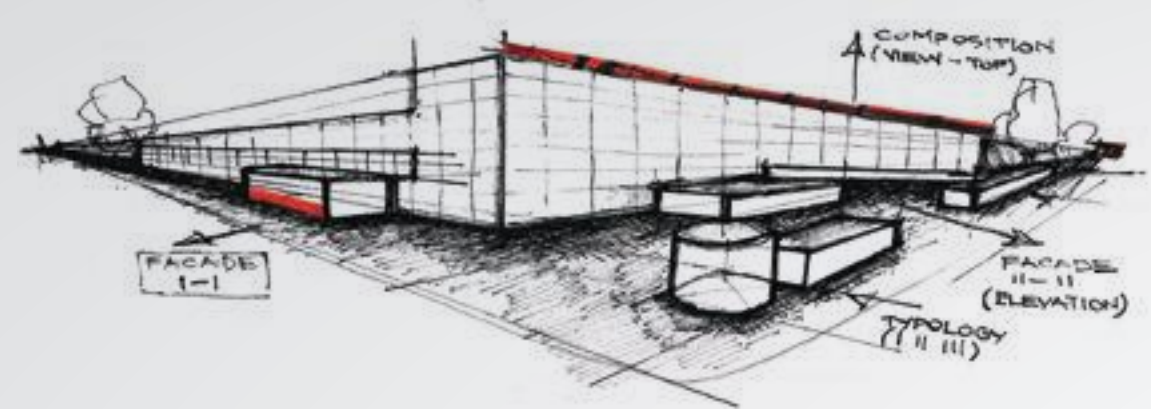
Type of building **Industrial facility**

Project timeline **2020-2021**

Location **Čuprija, Serbia**

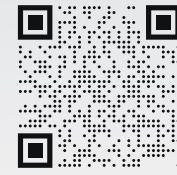
Area **23000 m²**

To a casual observer, the building is a typical modern construction designed for industrial production with a concept and expression that suits its purpose. It is formed with straight and 'clean' lines, regular geometric shapes, unremarkable in its colour palette of white and grey. Everything points to recognizable principles of planning and design dedicated to a production process. Both inside and out, materials such as reinforced concrete, thermally insulated prefabricated metal cladding panels, prefabricated AB structural elements and floating steel canopies illustrate the modernity of the building.





Hutchinson



In 2014 we were awarded the contract to develop a new production compound on a site in Ruma, Serbia, for the needs of the Hutchinson group. This was a result of bringing together our efforts to put into practice our 'Design & Build' approach and our Client's trust and willingness to engage in an open-minded and dynamic analysis of the needs of the production process. Uniting of responsibilities of Designer with those of Contractor became very early our strategic goal which we reached, for the first, time in this project. Being given the freedom to analyze the requirements of the program to be designed together with the Client in an open and constructive dialog put us in the position to come as close as we ever did to complete the command of design and construction processes.

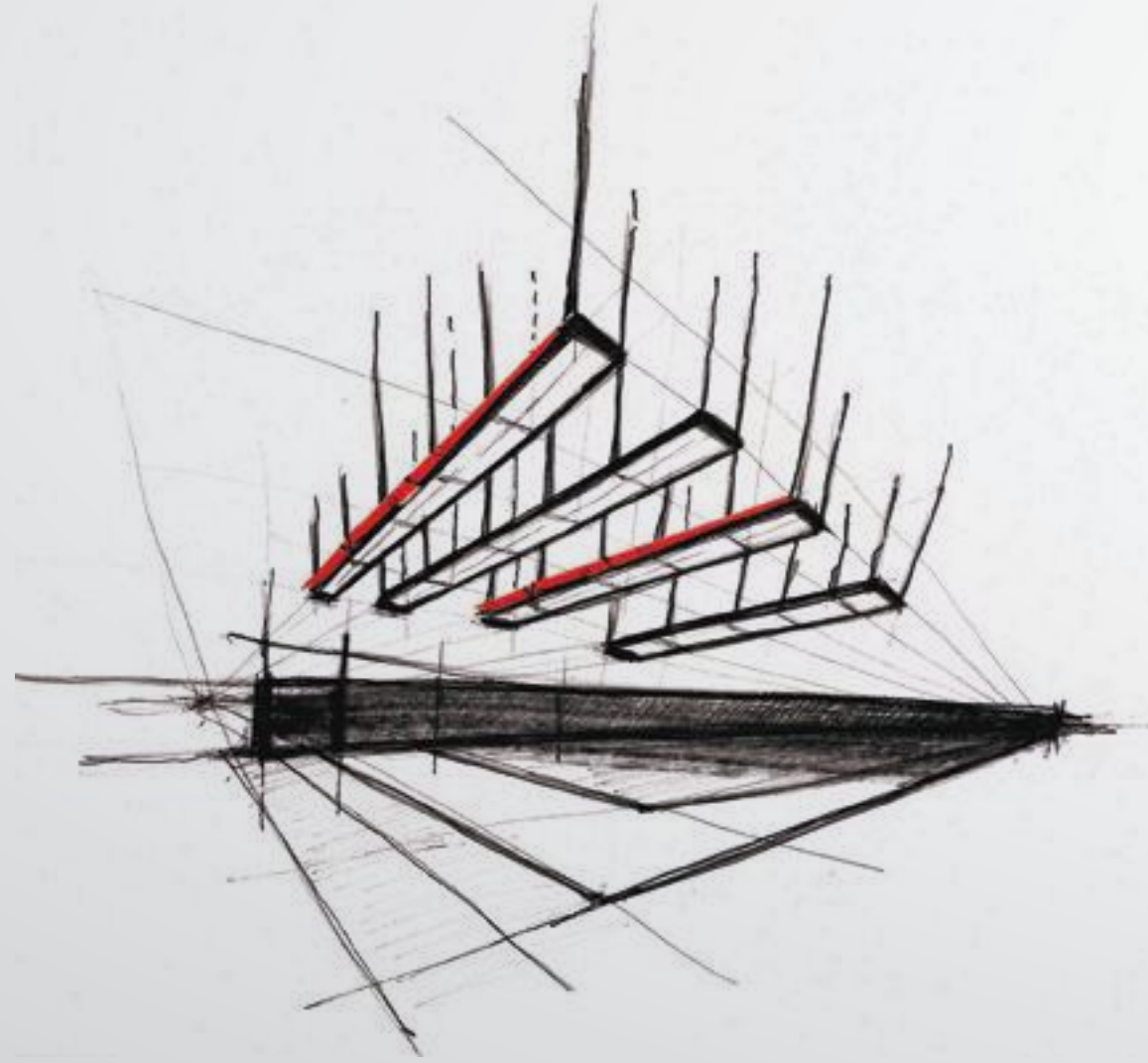
▶ STRUCTURA CONCEPT

Designer Arch APFL **Uroš Janković**
Project Manager M.Sc.C.E. **Danijel Rajković**



Project task **Design & Construction**
Type of building **Industrial facility**
Project timeline **2014-2019**
Location **Ruma, Serbia**
Area **25000 m²**

Coping with the evolving requirements and opening of new possibilities made us start looking at the potential of prefabrication in general and pre-stressed concrete truss elements in particular. The site as a whole became a testing ground for possibilities of a very reduced number of building elements and procedures practically eliminating the need for detailing. Now, after phase five covering 25000m², we can say that this sequence of projects represents a kind of statement on the nature of the joint effort of the Client, the Designer, and the Contractor to meet the needs of a production process most efficiently and coherently.





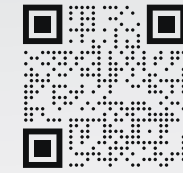
CTP phase II



The brand new manufacturing and storage facility of the investor CTP Invest lies in the industrial zone of Novi Sad and covers a surface area of 25,000 m². It consists of business premises arranged in three separate functional units (A1, A2 and B) that can easily be adapted to the needs of future lessees. They all have separate technical rooms, while two of the units also contain office zones. The design and implementation of this premium facility was conducted fully in line with the investor's high standards, resulting in a highly multifunctional space that can easily be adapted to various types of businesses to provide optimum working conditions.

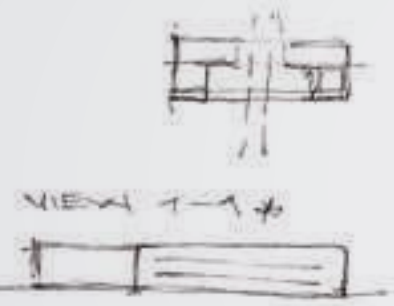
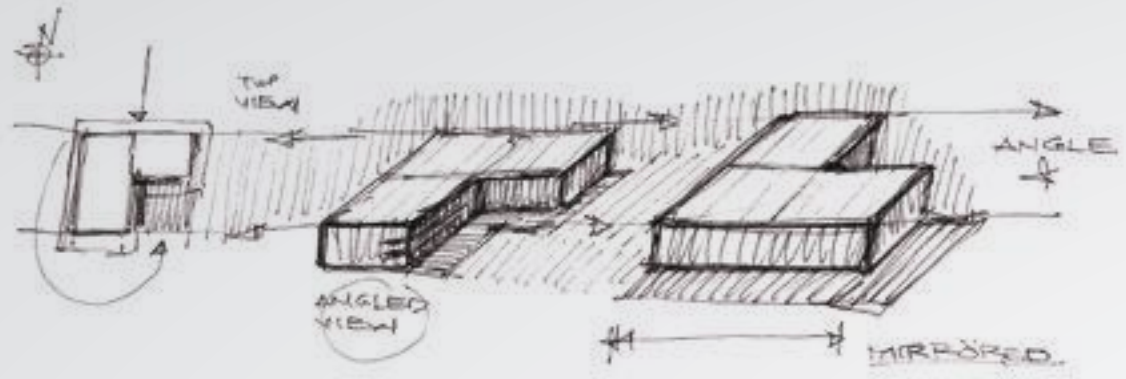
STRUCTURA CONCEPT

Designer M.Sc.A. **Milica Stojčević**
Project Manager M.Sc.C.E. **Danijel Rajković**
Project Manager M.Sc.C.E. **Branislav Košarčić**



Project task **Design & Reconstruction**
Type of building **Industrial facility**
Project timeline **2019/2020**
Location **Novi Sad, Serbia**
Area **12000 m²**

The entire complex is envisaged to fit naturally into the area - by forming green lawns and belts of tall trees and herbage, simultaneously enriching the space and increasing the atmosphere and environmental value of the location itself. The design and implementation of this premium facility was conducted fully in line with the investor's high standards, resulting in a highly multifunctional space that can easily be adapted to various types of businesses to provide optimum working conditions.





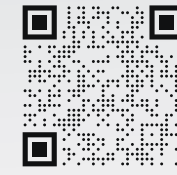
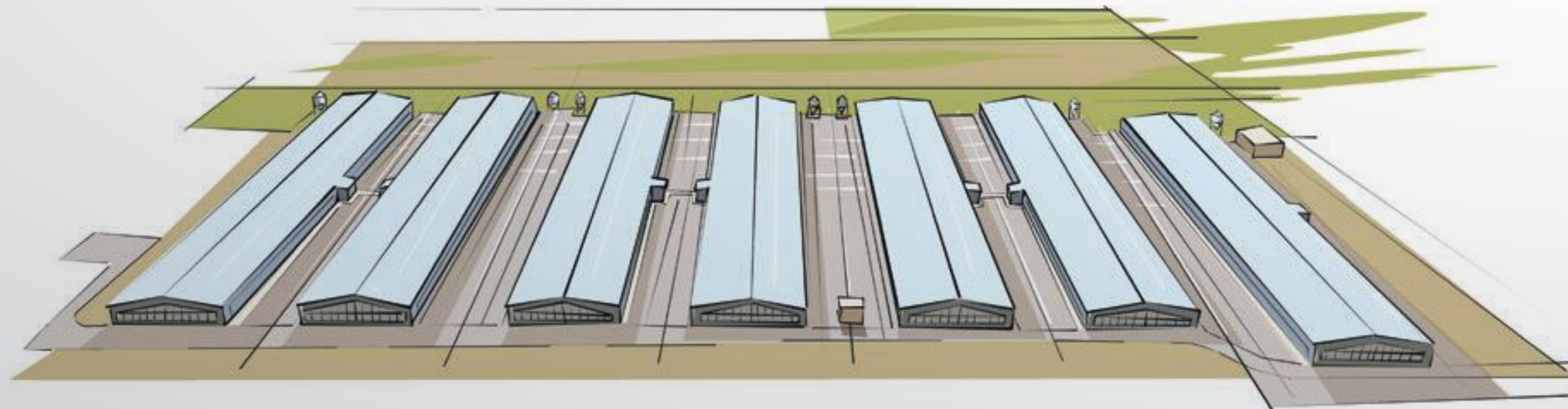
Perutnina Ptuj



The Investor has submitted a request for the design and construction of a modern broiler farm in Backa Topola. The farm is located away from the settlement, but positioned so as to be near a local road to facilitate communication and transport of poultry. Ensuring quality in poultry farming requires compliance with certain basic requirements, primarily regarding quality housing, quality feed and a high degree of hygiene in the facility and the complex itself. In this case the form of the building primarily follows its function and the technology in question, highly demanding in terms of temperature, humidity, ventilation, maintenance of a suitable micro-climate, constant air flow, a high degree of hygiene: all aimed at ensuring the highest quality conditions for raising animals and avoiding animal deaths.

STRUCTURA CONCEPT

Designer M.Sc.A. **Milica Stojčević**
Project Manager M.Sc.C.E. **Aleksandar Trkulja**



Project task **Design & Construction**
Type of building **Broiler farms**
Project timeline **2019-2023**
Location **Bačka Topola, Serbia**
Area **3 x 17500 m²**

The buildings for broilers have rectangular floor plans of 120 x 21 m, with a total area of 2,520 m². They have an assembled steel structure, whose columns are supported by reinforced concrete parapet wall panels, on AB point foundations casting. The main roof structure consists of trusses spanning 21m bearing rafters spaced at 2.6m. The longitudinal façade is stabilised with vertical wall braces and the roof with horizontal roof braces. The facades, roof and ceilings consist of thermal insulation panels. An interesting feature and a challenging one to execute was the unreinforced concrete floor slab.



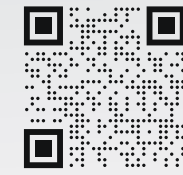
Feka Automotive



The building has a manufacturing and commercial purpose, designed for the Turkish investor 'Feka Automotive'. The starting point for the design was the need to divide the manufacturing and business sections, where three types of user will be able to move and function without obstacles, but also to develop a special atmosphere for future visitors and clients. For all of these reasons we connected three cubes with different purposes and volumes into a single compact mass. The exterior division was achieved by forming each of the three cubes that make up the compact mass of this facility, with an emphasized entry partition. The openings of the façades were dictated by the volumes of the rooms inside.

STRUCTURA CONCEPT

Designer M.Sc.A. **Svetlana Bošković**
Project Manager M.Sc.C.E. **Petar Živanović**



Project task **Design & Construction**
Type of building **Industrial facility**
Project timeline **2018-2019**
Location **Cuprija, Serbia**
Area **6000 m²**

This facility is of capital importance for the town of Čuprija, which gave us an additional incentive to be as efficient and accurate as possible in my work. In addition to pre-stressed prefabricated elements, the structure contained a large amount of monolithic concrete, together with a secondary structure of steel profiles, creating an enormous skeleton. I would particularly emphasize the colour range of the facade cladding and the refinement of the window and door profiles. The road, car park and pavements occupy their own spatial unit.



Black and White

Black & White

The building is a manufacturing and commercial facility intended for the production, processing and sewing of textile products. It is located on a site in Zemun's commercial zone, between the Belgrade – Novi Sad highway and an internal road. The facility is positioned so as to have quick and easy access to the Belgrade – Subotica highway, and is well connected with other parts of the city. A wide, flat, green belt separates the building from the road. The building has a gross floor surface of 3,158m² on a site of 4,790m². The administrative section consists of ground + 3 floors, while the manufacturing section is a single-story structure with a gallery extending along the entire circumference of the production line. The inspiration for defining the form and materials stems from the name of the company headquartered in the building - Black and White.

► STRUCTURA CONCEPT

Designer M.Sc.A. **Svetlana Bošković**
Project Manager M.Sc.C.E. **Andrija Đurić**



Project task **Design & Construction**
Type of building **Industrial facility**
Project timeline **2019-2020**
Location **Belgrade, Serbia**
Area **2500 m²**

The monochromatic palette was chosen to allow a focus on the myriad of patterns and colours of all the materials you see on entering the structure, and that are the very reason for building the facility. The freestanding structure has a clean, geometric form. The compact and simple form was obtained through the use of black façade panels that are intersected by large transparent surfaces that draw us into the building's interior. The building consists of a prefabricated structure with a façade comprised of panels, providing a cost-effective and efficient modern construction.

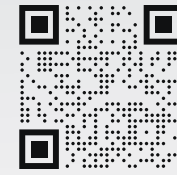
Dag and Co



The manufacturing and storage facility DAG-CO is located in the lovely little town of Voganj near Ruma, beside the road towards Sremska Mitrovica. Its location is highly attractive, being accessible and visible from the local road. Due to the rapid growth of the company and the volume of its manufacturing, the investor wanted to build a facility that would meet its needs and unify all phases of the manufacturing process in a single location. The total surface area of this structure therefore covers 4,400 m² and consists of three separate functional units: administrative (towards the road), manufacturing and storage (towards the rear). There is a clear difference between the administrative and manufacturing and storage parts in the finish of the building façades. The administration section contains office space with meeting rooms, a showroom to exhibit products, and a section for the staff.

STRUCTURA CONCEPT

Designer M.Sc.A. **Milica Stojčević**
Project Manager **Milorad Marić**



Project task **Design & Construction**
Type of building **Industrial facility**
Project timeline **20**
Location **Ruma, Serbia**
Area **44000 m²**

A special request by the investor was for a transparent visual connection between administration and manufacturing, so that the management can always follow production. The administrative part of the building is carefully oriented partly towards the east but mainly towards the sunny south, forming well-lit and pleasant office spaces. Its exterior is decorated by a particular composition of façade openings, repeated at regular intervals, and a multi-coloured façade bearing the recognizable colours of the investor's logo.

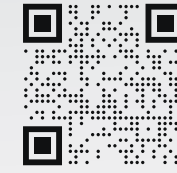
LSD

LSD

This warehouse facility is located in Zemun Polje, developed for the investor Light and Sound Design. The purpose of the building is storage, but in the design process we have made sure the materials and organization of the space are kept flexible, and that it flexibly provides for future adaptation to various purposes. This makes it possible to divide it into several independent units by floor.

► STRUCTURA CONCEPT

Designer Arch **Svetlana Bosković Samardžić**
Project Manager M.Sc.C.E. **Andrija Đurić**



Project task **Design & Construction**
Type of building **Showroom and administration**
Project timeline **2018**
Location **Zemun, Serbia**
Area **3000 m²**

In its shaping and materials we opted for an industrial appearance, using materials that meet demanding requirements for thermal and acoustic properties. In this spirit, the finish uses shades of grey contrasted with the natural green walls. This visual relationship was chosen to present a basis for different users and their needs for interior movable furnishings.

Caminada

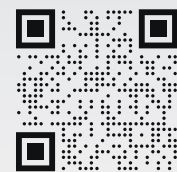


This commercial and manufacturing building in Subotica was designed for the Italian investor Caminada. The investor's request was to focus on manufacturing and communication within the building. We placed a visual emphasis on the main entrance by accentuating its form with an intense red highlight, the trademark colour of the company. We distinguished the commercial and manufacturing sections of the interior using different materials, patterns and colours. The requirement for two tracts of offices towards one façade was met by setting tall transparent glass surfaces along the hallway, and partition walls between the offices. The full doors with a warm wood pattern visually intersect the long glass surface and provide the hallway space with a warmer, more playful atmosphere.

► STRUCTURA CONCEPT

Designer Arh **Svetlana Bošković Samardžić**

Project Managers M.Sc.C.E. **Petar Živanović** and M.Sc.C.E. **Andrija Đurić**



Project task **Design & Construction**

Type of building **Industrial facility**

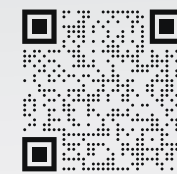
Project timeline **2017/2018**

Location **Subotica, Serbia**

Area **2400 m²**

This complex, divided into a commercial, production and warehouse section, with its ancillary facilities (power block and two underground tanks) and complex external organization, required the engagement of a high quality workforce and great planning precision. Maintaining the quality of works during the manufacturing of the epoxy floor in the production section, the contact façade of the commercial part of the building and the internal transport routes required particular efforts by all participants in the project, due to unfavourable weather conditions at the time of implementation.

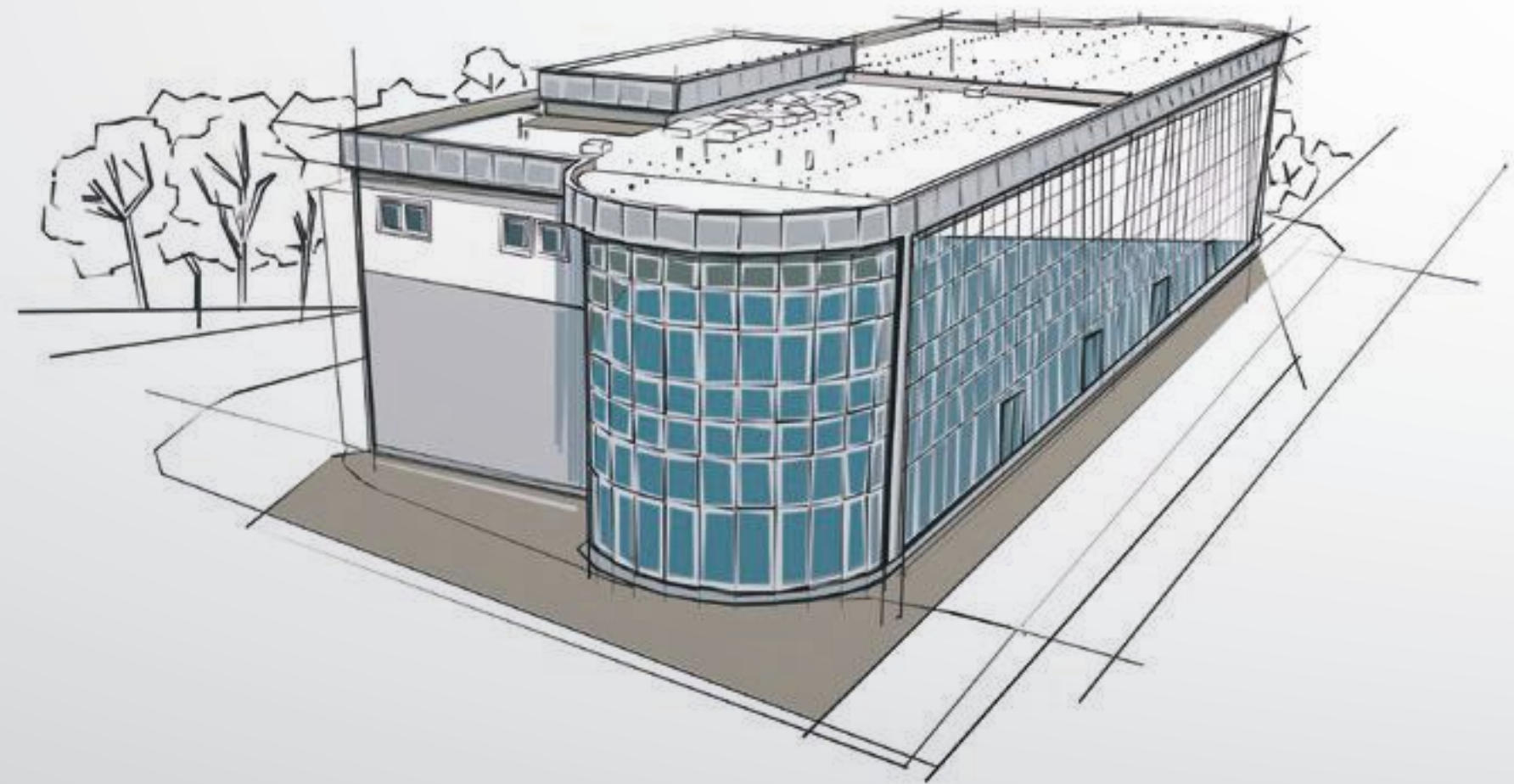
Commercial building



The building was developed as the new construction of a free standing facility on a corner site in the commercial complex of Klisina in Batajnica. The function of the building covers warehouse spaces, commercial spaces and commercial apartment spaces, with ancillary facilities. In a functional and ownership sense the building is divided into two separate and independent units: Unit A and Unit B. Unit A consists of the commercial and hotel spaces, while Unit B consists of warehouse and commercial spaces. The seemingly irreconcilable, divergent functions needed to be fit into a single unit - one building, spatially divided and connected by a single wall. This interior joint wall physically separates the building into two contrasting functions, for two different owners. The diversity present here is also notable on the exterior of the building.

▶ STRUCTURA CONCEPT

Designer Arh **Jelena Samardžija**
Project Manager M.Sc.C.E. **Andrija Đurić**



Project task **Design & Construction**
Type of building **Commercial building**
Project timeline **2015/2016**
Location **Zemun, Serbia**
Area **3500 m²**

There are two different units of shape: the first - continuous, flat and completely covered by glass, with a wall curtain - a street facade, with rounded sections at the ends of the building, transparent and open to the view of those approaching the building from the street, and the second - a yard facade made of sandwich panels, with flat and sharp angles, forming the fragmented volume of the rear of the building. The main challenge and a highly demanding task for me was precisely this diversity in all segments of the architecture, stemming from the prior conviction of the authors that it should be interpreted as such.

References

DFE and Construction

CTP

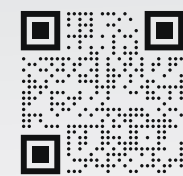
ctp

The brand new manufacturing and storage facility of the investor CTP Invest lies in the industrial zone of Novi Sad and covers a surface area of 25,000 m². It consists of business premises arranged in three separate functional units (A1, A2 and B) that can easily be adapted to the needs of future lessees. They all have separate technical rooms, while two of the units also contain office zones. The design and implementation of this premium facility was conducted fully in line with the investor's high standards, resulting in a highly multifunctional space that can easily be adapted to various types of businesses to provide optimum working conditions. Pleasant and safe working spaces were created throughout the building, achieving this feeling through the free entry of daylight and creation of a close visual link to the surrounding landscape.

STRUCTURA CONCEPT

Designer M.Sc.A. **Milica Stojčević**

Project Manager M.Sc.C.E. **Danijel Rajković**



Project task **Design & Construction**

Type of building **Industrial facility**

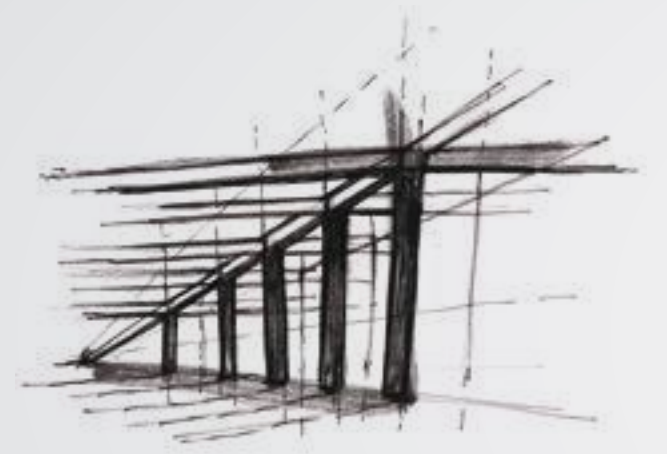
Project timeline **2018/2019**

Location **Novi Sad, Serbia**

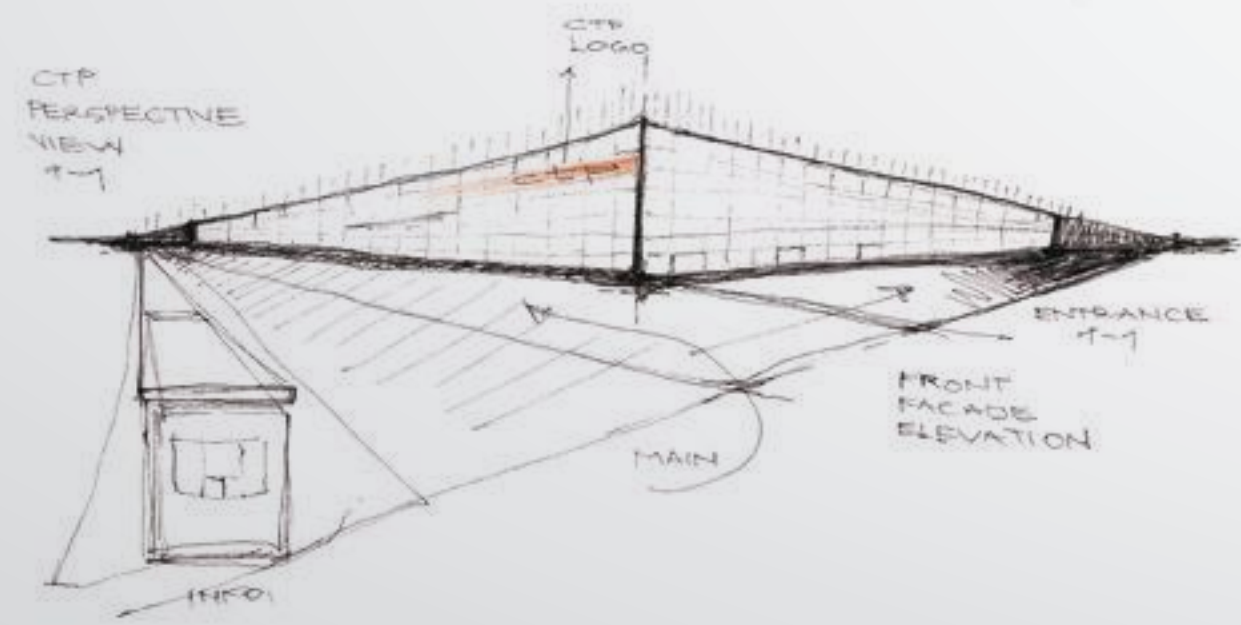
Area **25000 m²**

The entire complex is envisaged to fit naturally into the area - by forming green lawns and belts of tall trees and herbage, simultaneously enriching the space and increasing the atmosphere and environmental value of the location itself. The design and implementation of this premium facility was conducted fully in line with the investor's high standards, resulting in a highly multifunctional space that can easily be adapted to various types of businesses to provide optimum working conditions.

ctp



ctp



STRUCTURA CONCEPT





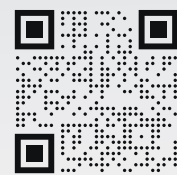
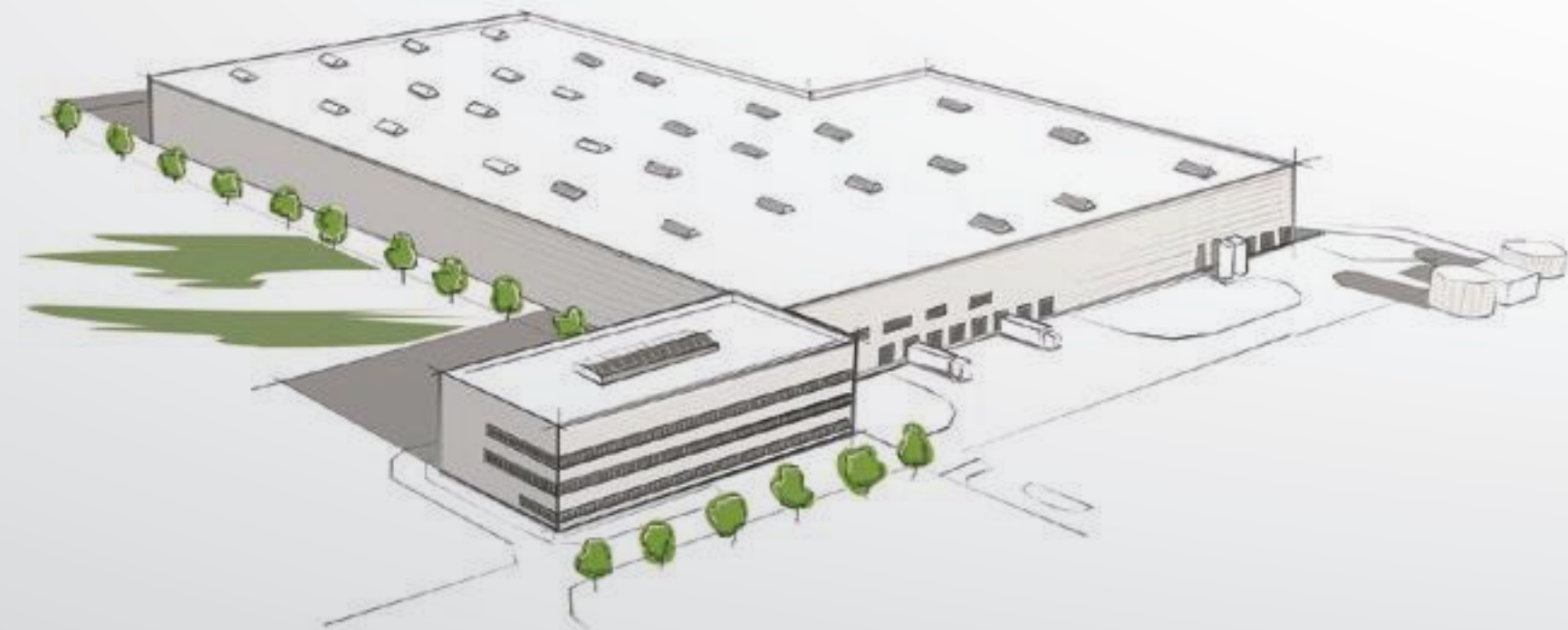
CTP RHO

ctp

The construction of the manufacturing and business complex in the North IV industrial zone in Novi Sad is exceptionally important for our company, as it represents the continuation of cooperation with an already familiar investor - the company CTP Invest, Serbia. For us, this project is a confirmation that we have justified the trust of investors in previous projects, and we will do our best to ensure that the cooperation is again at a highly professional level. The North IV industrial zone was arranged and adapted for construction in 2016. Since then, 2 large industrial facilities have been built there, one of which is owned by CTP, which is also on our reference list. Due to its excellent position directly connected to the motorway via the E-75, the growth and development of this part of the city is continuing at pace.

STRUCTURA CONCEPT

DFE M.Sc.A. **Milica Stojčević**
Project Manager **Danijel Rajković**



Project task **DFE & Construction**
Type of building **Industrial facility**
Project timeline **2021/2022**
Location **Novi Sad, Serbia**
Area **26765 m²**

The manufacturing and business complex is the first phase of building facilities on the site. In the first phase of the complex, a manufacturing section with a warehouse and office block will be built, besides ancillary facilities and an internal road. The total area of the buildings is 26,766m², and the road area is 11,980m². The facilities are designed and constructed for a well-known user, who is engaged in the production of electric motors for the automotive industry.





Hotel Grand

MK Mountain Resort

On Kopaonik, in the most beautiful National Park in Serbia, general contractor Structura Concept has renovated and furnished the Grand Hotel. For a period of seven months, our team of civil, HVAC, electro, and interior engineers have worked together to achieve the goal to the highest standards and hand over the hotel. Special emphasis was placed on the entrance - reception, the Lounge BACCO bar, the Garden restaurant, the Boarding House restaurant, the spa and pool area. Everything had to be perfectly in line with the highest world standards.

STRUCTURA CONCEPT

Project Manager M.Sc.C.E. **Dragan Đinović**
Project Manager M.Sc.C.E. **Danijel Lopatničić**

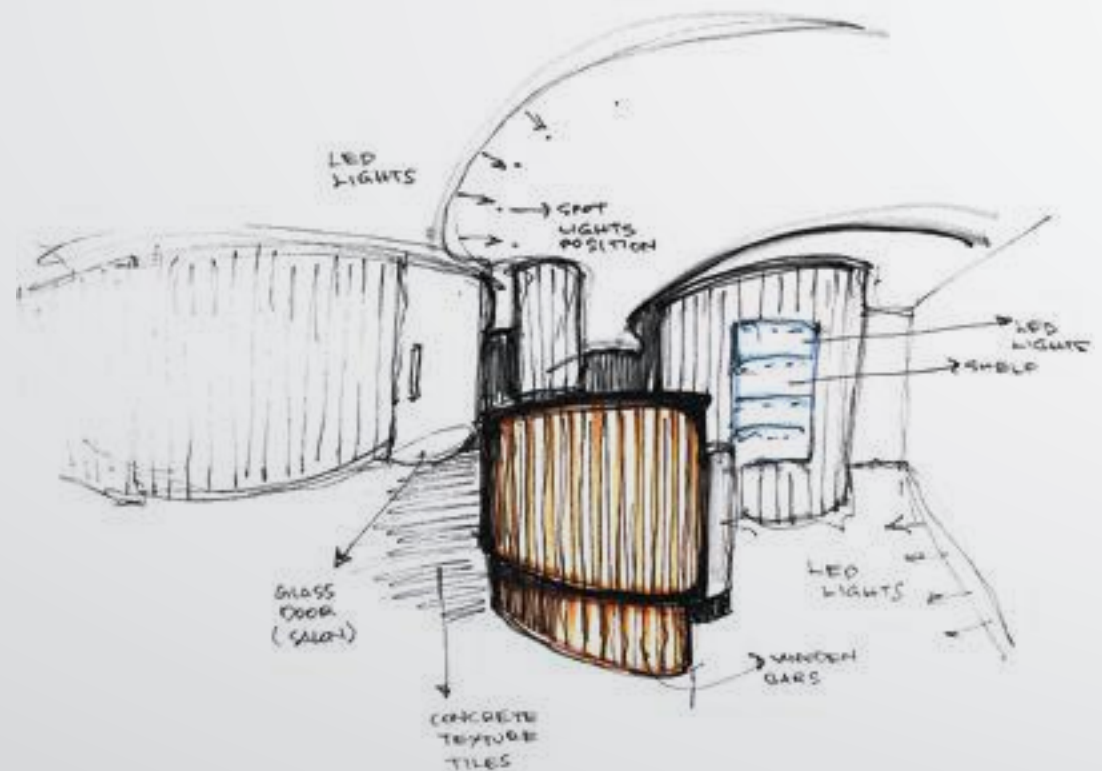
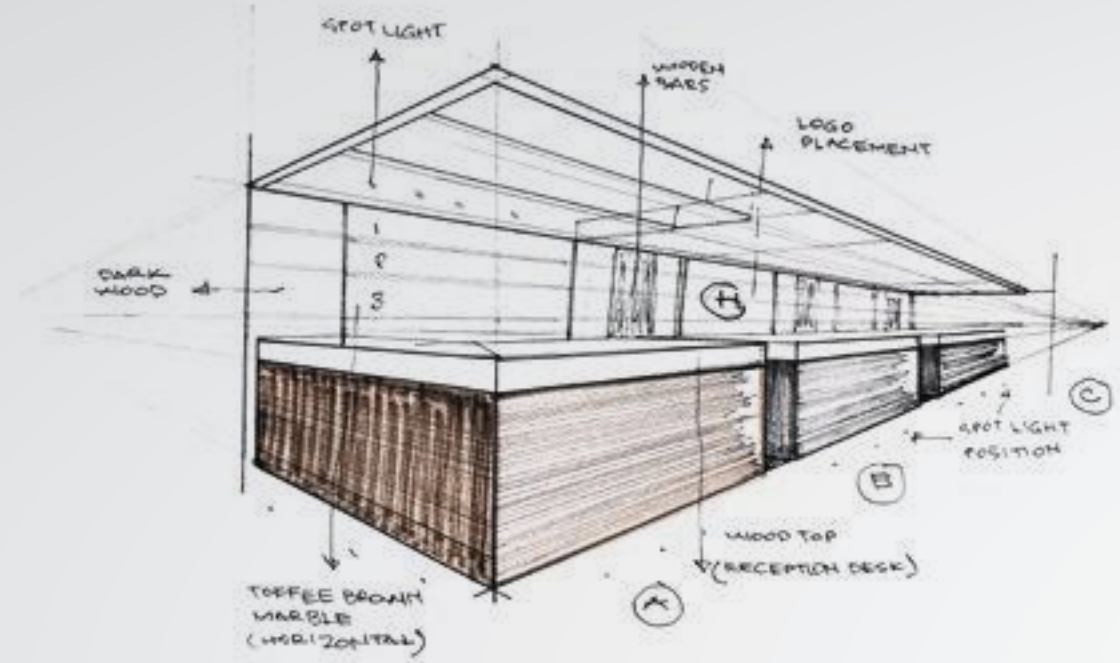


Project task **Reconstruction and furnishing**
Type of building **Hotel**
Project timeline **2021**
Location **Kopaonik, Serbia**
Area **7000 m²**

The sophisticated furniture subtly softens the playfulness and sharpness of the finishing elements, and the result of this combination is an elegant and pleasant space to stay in. The interior is further enriched by plant life. Natural materials dominate, with marble, wood and leather both in the paneling and the furniture. 'Grand' hotel vision has been defined by a seamless alignment of cultural and design sensibilities, modern luxury, art and craftsmanship. A lot of work and effort has been invested to make even the smallest detail perfect, to make an outstanding impression.



MK Mountain Resort

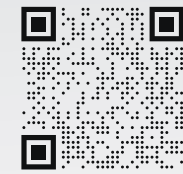


STRUCTURA CONCEPT





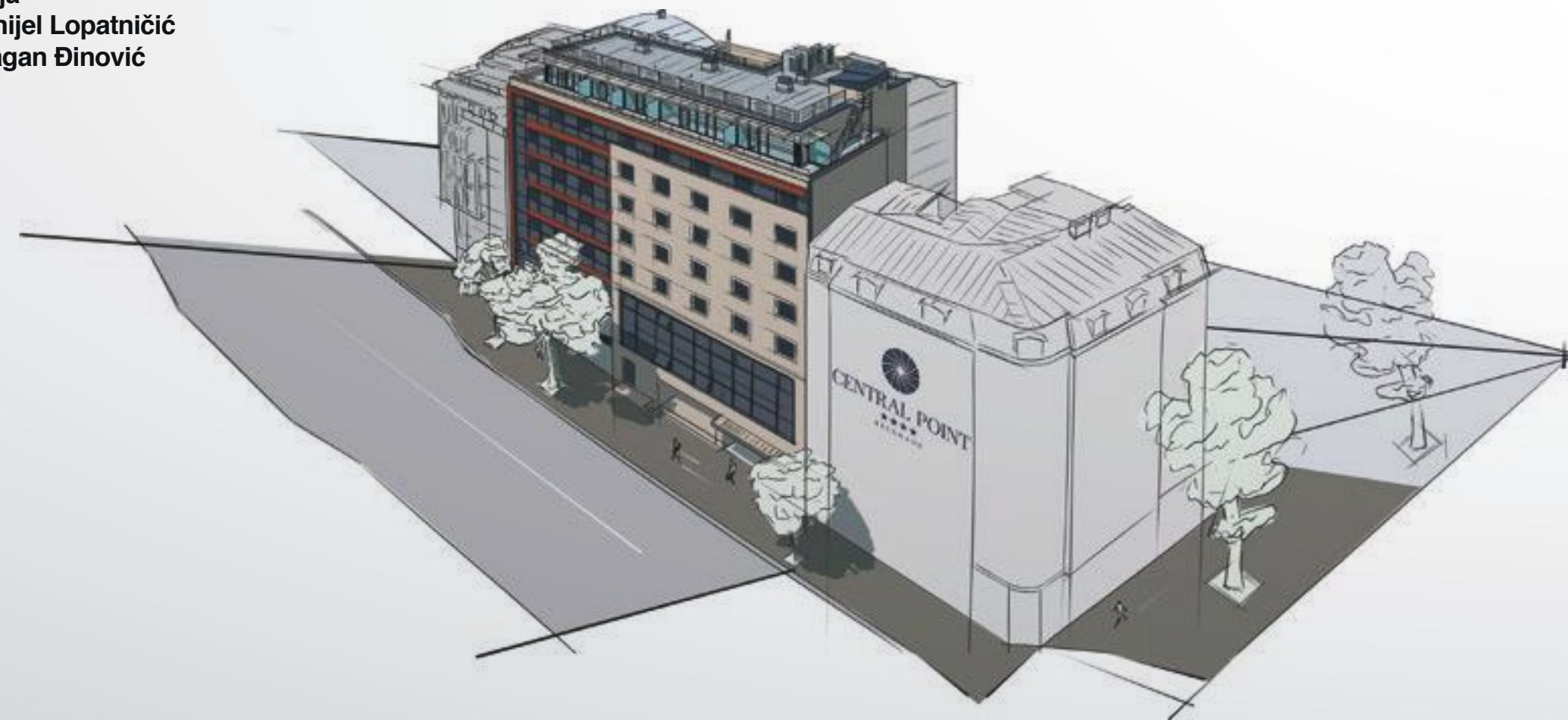
Hotel Central Point



In accordance with the main function of bed & breakfast hotel in the central core of the City of Belgrade, the building consists of 2 underground levels of garages with technical and ancillary rooms, a low ground level that provides vehicle and pedestrian access to the hotel from Takovska Street, with the reception and access features of the commercial part of the building, a mezzanine - gallery with a serving kitchen and restaurant and the business area of the building, with another 6 floors and a recessed floor with 57 accommodation units equipped with the latest, high-quality furniture and fittings, for the comfortable accommodation of hotel guests at a 4-star level. Also extraordinary artistic and aesthetic properties and, on the other hand, the stylistic properties of the existing building – all of these together comprise the basic specific features of this building that one first notices.

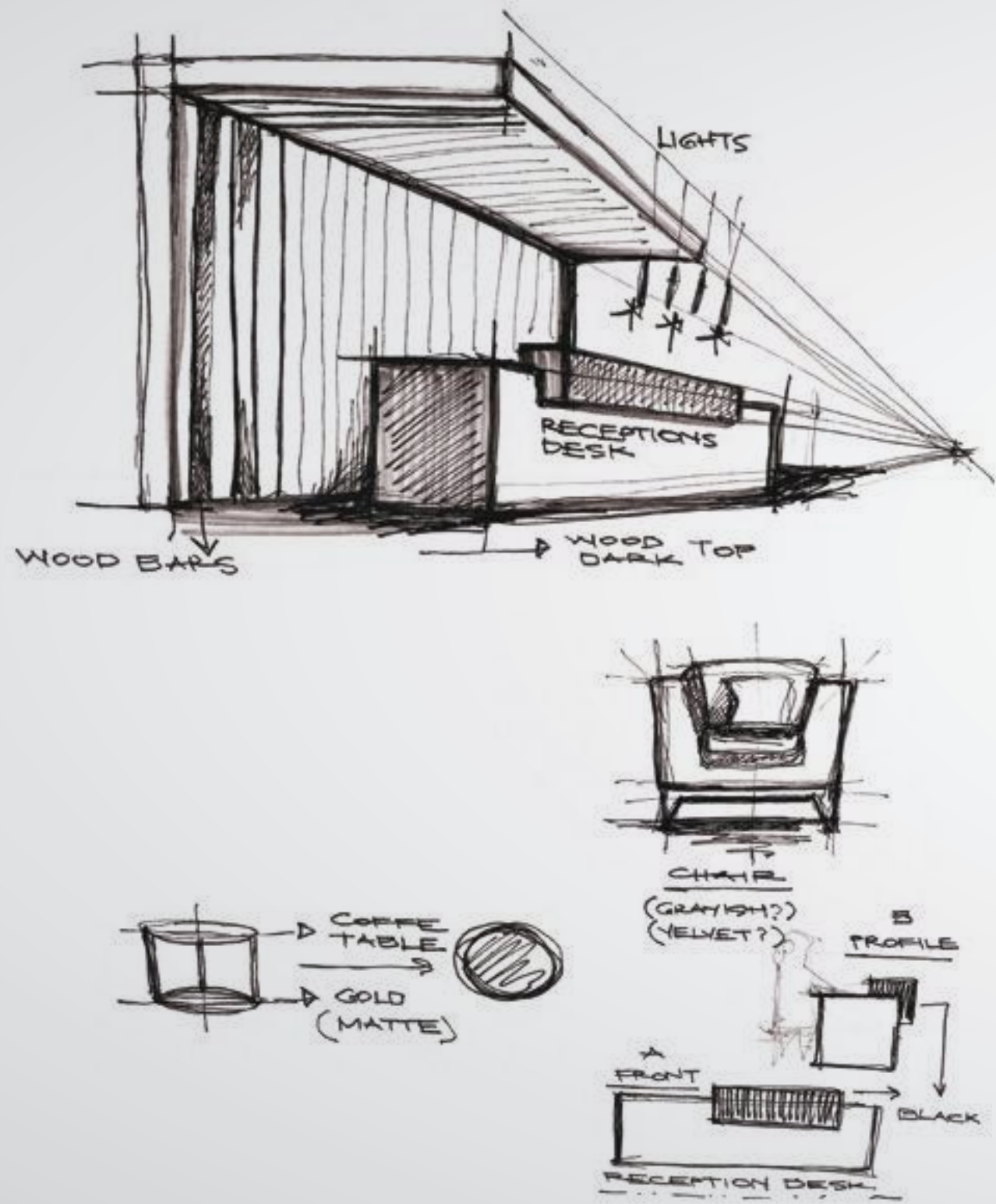
STRUCTURA CONCEPT

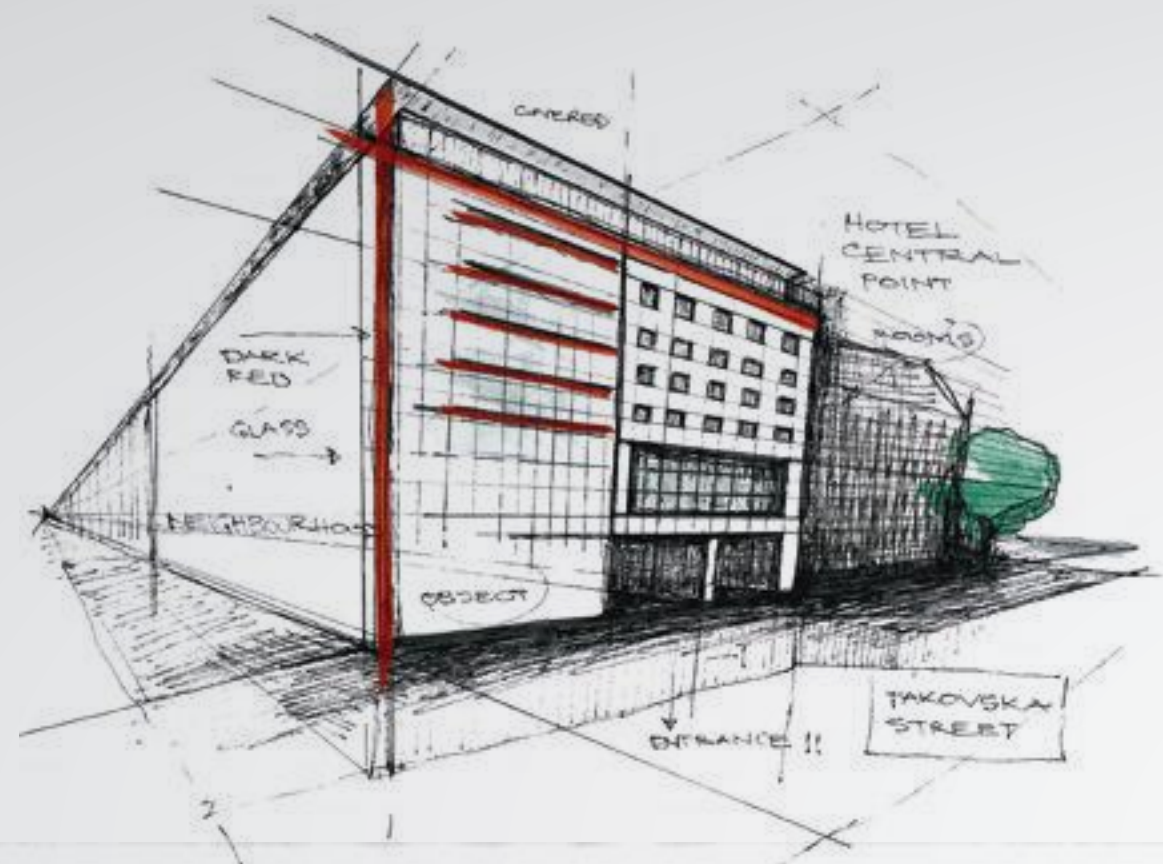
DFE M.Sc.A. **Jelena Samardžija**
Project Manager M.Sc.C.E. **Danijel Lopatničić**
Project Manager M.Sc.C.E. **Dragan Đinović**

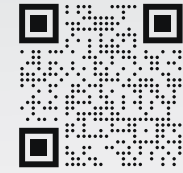


Project task **DFE & Construction**
Type of building **Hotel**
Project timeline **2019/2020**
Location **Belgrade, Serbia**
Area **4200 m²**

The complexity of the function of a hotel, located in the central core of Belgrade, complemented by architectural modelling where the design approach was to connect a modern architectural expression with the use of contemporary materials. It was precisely this - retaining the authenticity of the façades of the existing building, harmonization with the elements that form the volume of the entire facility, and fitting all of it into the existing environment, with the tendency and desire of the author and investor to emphasize its exclusive nature, along with the complex function and location of the building itself.







Working with one of our oldest Clients is always an opportunity to test and build upon our understanding of what the needs of a production process are and how they evolve. Having been granted the privilege to design the phase II of Gorenje refrigerator plant in Valjevo (2012), making it the largest such production line in the region, six years later (2018) we were entrusted with designing and building of yet another extension of the capacities to house the line for 'old-timer' models. Out of this project we started developing a new line of competence which we had an opportunity to apply to the benefit of our Client on various projects notably in connection to the move of 'old-timer' production line and the move of refrigerator door production to Serbia in 2018.

► **STRUCTURA CONCEPT**

Project Manager M.Sc.C.E. **Danijel Lopatničić**



Project task **Design & Project Management**
Type of building **Industrial facility**
Project timeline **Phase I 2012, Phase II 2017**
Location **Valjevo, Serbia**
Area **23500 m²**

When working for a Client who is extremely aware of the constraints of the technology used for production, the project grows naturally from exact sequence of operations and flow of different fluids used in the process either as raw materials such as iso-cyanide and polyol or sources of energy such as, compressed air, steam, electricity or gas required to transform these raw materials into final products. Once a project like this is finalized, one has the impression that the housing structure itself arrived with the machines and that conditions are being created for it to expand.



gorenje

Kia and Volvo

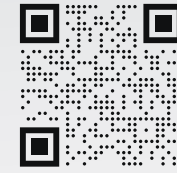
KIA VOLVO

This business facility consists of two auto-salons and a common business zone located at the gallery level. The task was to form two different spaces that comprise a single unit. In addition to the need to comply with all standards for designing salons for renowned automobile manufacturers, the challenge was also to clearly define a facade that would in itself constitute an advertisement for these two companies. The carefully developed concept was materialized through a building designed with an industrial style, decorated in addition to its facade by the ambience of the interior. The finish of the façade itself - the colour of the glass and panels - was chosen in accordance with the trademark colours of the automobile brands for which that this modern complex was made.

STRUCTURA CONCEPT

DFE M.Sc.A. **Tijana Miškov**

Project Manager M.Sc.C.E. **Ivan Petrović**



Project task **DFE & Construction**

Type of building **Car retail**

Project timeline **2018/2019**

Location **Belgrade, Serbia**

Area **2100 m²**

The architectural solution for the new auto-salon of these renowned global car manufacturers in Belgrade presented a number of challenges during construction, particularly in terms of connecting different materials and finishes on the building, different facade elements (glass façade and thermal façade panels) and the interior. The full complexity of the construction manifested itself mainly in the organization of a large number of contractors for finishing works in the interior and the fitting of many different materials and items of equipment, each having a distinct technology of installation.



Siemens

SIEMENS

A free-standing low-rack warehouse, with a gross construction area of 3,035.98 m², located 1.5 km from city Kragujevac. The primary structure of the building is of prefabricated, reinforced concrete, which, in addition to large roof spans, is characterized by excellent fire-retardant properties. The roof structure is made entirely of prestressed trusses, which span up to 24 m, reducing the number of bearing points inside the building and enabling better use of the interior space.

The building includes an administrative section, with accompanying office and sanitary facilities for 30 workers. Part of the warehouse is served by an internal industrial rail track, whose primary function is to connect the warehouse and the production section of the tram factory.

► STRUCTURA CONCEPT

Project Manager M.Sc.C.E. **Danijel Lopatničić**



Project task **Construction**
Type of building **Warehouse**
Project timeline **2020/2021**
Location **Kragujevac, Serbia**
Area **3000 m²**

Design of the grounds includes asphalt roadways for heavy traffic, separated from the building and surrounded by green areas. The newly designed building forms an urban, architectural and functional whole with the existing production and administrative facilities on the factory grounds. The construction work has been organized so as not to affect the functioning of existing facilities and internal traffic infrastructure throughout the period of works, with maximum care for the health and safety of the staff.



Siemens II

SIEMENS

We have been collaborating successfully with our business partner Siemens since 2020. In 2020, we built a warehouse within the already existing complex. Today, in 2022, the cooperation continues. At the request of the investor, a new Business building is in construction process with a parking space and an internal road within the complex. The first phase of construction of the business facility envisages construction of the complete structure of the building, as well as the complete execution of the exterior of the building (facade and roof covering.)

▶ STRUCTURA CONCEPT

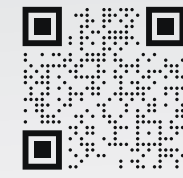
Project Manager M.Sc.C.E. **Danijel Lopatničić**



Project task **Construction**
Type of building **Business building**
Project timeline **2022/2023**
Location **Kragujevac, Serbia**
Area **2350 m²**

The first phase also envisages the complete execution of all interior works on the ground floor and first floor. Business space that will be put to use in the second phase. The office building in first phase includes open-plan offices, meeting rooms, management offices, a software testing laboratory, a rack room, men's and women's toilets, telephone booths, a research center, "meet and talk" spaces and "scrum" zones. The second phase envisages internal works on the second floor, which will be organizationally identical to the first floor.

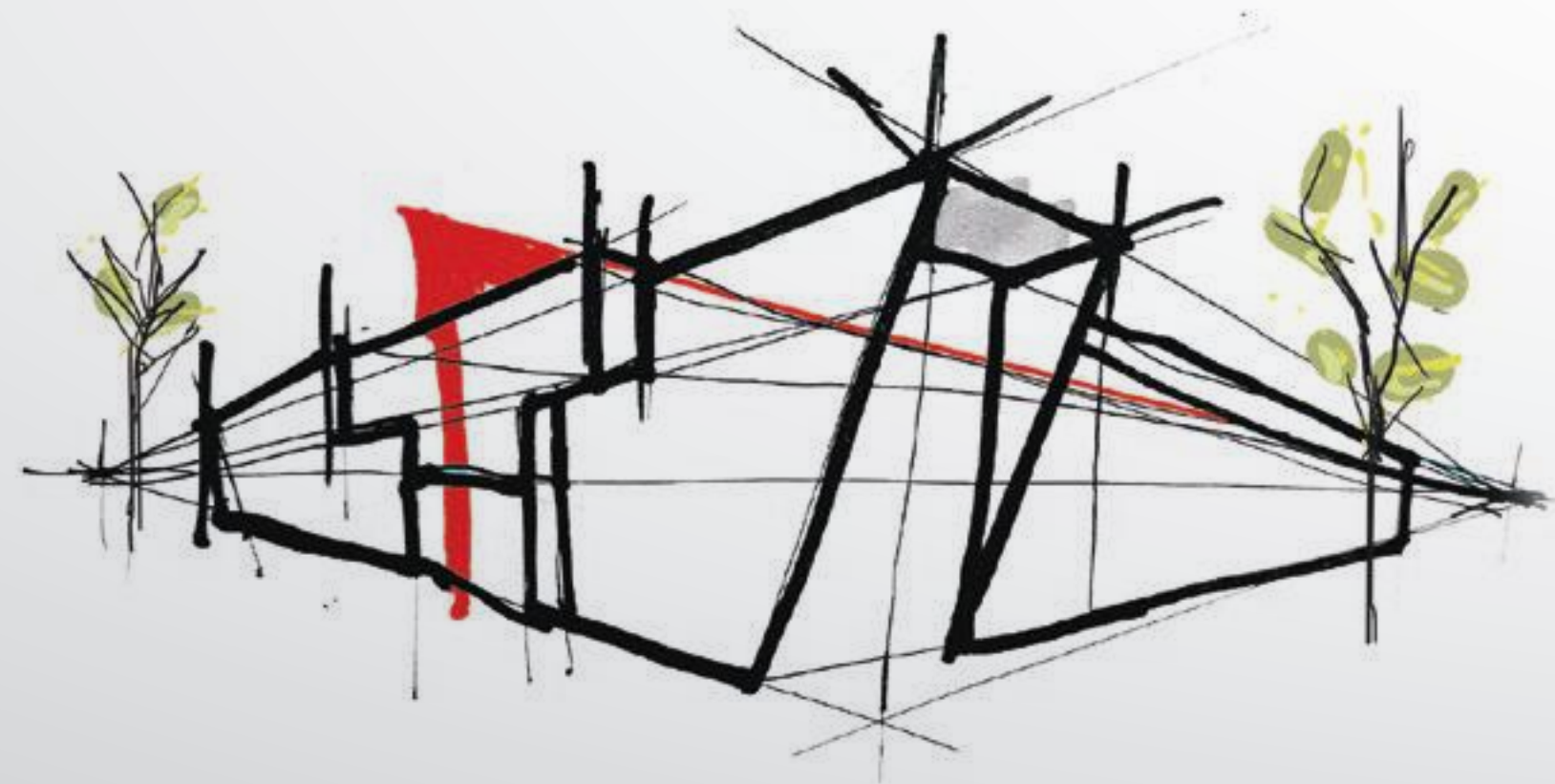
Fenestra



The building was developed for the needs of the investor and in accordance with the construction permit, as a new free-standing facility in the commercial complex near Batajnica. Regarding its function and shape, it consists of two connected units the front office administration area and the rear storage area - a hall. The entire building and its external design were produced as two completely identical but symmetric units with a mirror image division of function and form along transversal and longitudinal directions, all in accordance with the investor's desire to enable the full division of the building for two owners. According to the author's vision, the symmetric division gives this commercial facility a specific character in its shape.

▶ STRUCTURA CONCEPT

Project Manager M.Sc.C.E. **Andrija Đurić**



Project task **Construction**
Type of building **Industrial facility**
Project timeline **2016/2017**
Location **Belgrade**
Area **2400m²**

The Fenestra business and logistics center was designed as a skeletal system. The investor's requirement that all structural elements be produced on the spot presented a particular challenge, both for the construction deadline and for the quality of the works. Particular attention was given to the construction of concrete roof supports during the installation of the shuttering, reinforcement, and the pouring of the concrete, due to the complexity of the structure itself, particularly in the administrative part of the building, as well as the difficult working conditions.

References

Design

Casa Maiac



In the development of the conceptual design, the idea was to provide a residential oasis near the Kosmaj forest. The spatial organization of the settlement is carefully planned in harmony with the topography of the terrain so that all units are provided with the best views of the natural environment.

► STRUCTURA CONCEPT

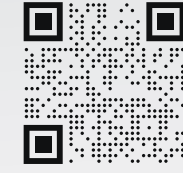


Project task **Design**
Type of building **Villas complex**
Project timeline **2021**
Location **Kosmaj Serbia**

The architecture of the settlement is dominated by warm earthen tones, which permeate the materials of both houses and surroundings, bringing the spirit of Tuscany to the heart of Kosmaj. The buildings are designed to meet all the needs of modern housing. The connection of the interior with nature has been achieved by orienting all the rooms where daily activities take place towards the private gardens with their enchanting views of the natural environment.



SavaCoop



The starting point for its design was the investor's goal of forming a representative logistical centre with the latest technical amenities that will fittingly follow the development of the company. The building itself is positioned so as to maximize the use of the shape of the parcel it stands on for the entry and exit of goods. The front of Industrijska Street and the corner that the parcel faces are planned for future administrative buildings and decorative green areas. Visually, the warehouse and distribution facility consists of a grey base zone of loading docks and entrances, topped by a massive layer in a combination of anthracite and corporate green.

► **STRUCTURA CONCEPT**

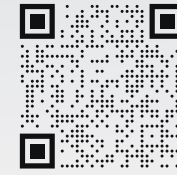
Designers Arch EPFL **Uroš Janković** and Arh **Dragan Štetin**



Project task **Design**
Type of building **Industrial facility**
Project timeline **2019**
Location **Novi Sad, Serbia**
Area **25000 m²**

Along the north side of the building this layer is penetrated by a dominant glass cube, overlooking the entrance and docks. There is a glass strip on the corner that breaks up the large mass of this element, making the interior space of the canteen and changing room airy and pleasant. The façade is further elaborated with discrete linear elements hiding the decorative lighting, at the same time creating a curved line that evokes the leaf-shaped logo of Savacoop. The need to build a large capacity fire protection tank was used to create a green space by fitting it in between the building and Industrijska Street.

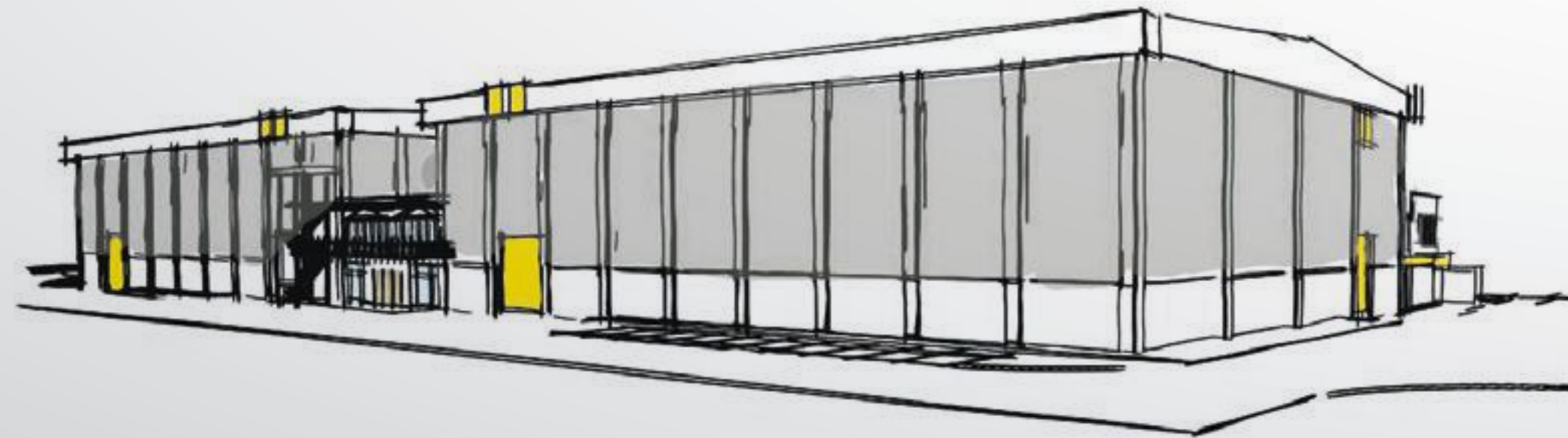
Film Complex



In other words, architecture is coupled with the needs, desires, but most of all the capabilities of the investors. This implies that it depends on facts to a great extent, but its actual field of impact lies in the sphere of meaning. The same is true for the Film Complex project. The initial architectural impulse for providing a solution was developed from the primary need of the film-making establishment for a certain type of space. An economical structure, a functional solution, and a certain artistic expression were pursued... starting from a concept and form predetermined by the investor. The solution was found in a prefabricated skeletal system used to successfully organize the complex: the studio building and workshops. The main facility is a studio building containing three film studios as its nuclei, with the remaining support structures threaded around them.

▶ STRUCTURA CONCEPT

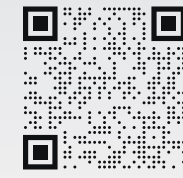
Designer Arh **Danijela Milojević**



Project task **Design**
Type of building **Film complex**
Project timeline **2019**
Location **Pančevo**
Area **12300 m²**

The studios are set up inside the building in a longitudinal row, girdled and interconnected with the ancillary administration rooms. Following the spirit of functionalism ("Form follows function." - Louis Henry Sullivan), rectangular geometrism, and constructivism, through the composition of rectangular and square elements, with no pretense of high artistic achievement and conditional primarily on the economic aspect, the building reflects and maintains function as its primary quality. The dynamic, commercial content of the film complex is sufficient to infuse the designer with unease and a feeling of responsibility.

Office building



This commercial building with ground floor business facilities is located in a commercial block in Novi Beograd, surrounded by 21st century buildings displaying alternating combinations of glass and aluminium with prominent vertical and horizontal lines. The logic hidden behind the geometry of the glass façade, key to the building's identity, is that the best and most durable architectural works are those inspired by their environment.

STRUCTURA CONCEPT

Designer Arh Tijana Miškov



Project task **Design**
Type of building **Office building**
Project timeline **2019**
Location **Novi Beograd, Serbia**
Area **14000 m²**

Thus the form of the building is seemingly simple, while strong, slanted lines that emphasise the volume make the structure dynamic and authentic. The materials and the main form of the façade are, in fact, the central characteristics making the building fit well with the integrity of its environment. Its volume is further accentuated by a white aluminium frame, separating the blue from the milky-white glass highlighting the recesses.



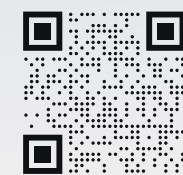
Input

INPUT

New development of a commercial-manufacturing facility in the Gornji Zemun commercial zone, along the Belgrade – Novi Sad MP75 main road, in Belgrade, Zemun Polje – for the local investor INPUT of Zemun. The investor's main business is preparing interior elements for retail companies and furnishing commercial spaces with store equipment. The task they set was to design a commercial facility on a site of approximately 8 ha along the Novi Sad – Belgrade main road in Zemun Polje. The aim was to design the facility in accordance with the needs of the investor, maximising the capacity, and for the structure to include all aspects of their business operations. A manufacturing and warehousing hall is designed with maximum size for the primary needs of the investor, to be built in two phases. Since the investor is in need of office space for their own administration – a management with working areas for economists, salespeople and designers – the design envisages an office annex with a specific shape and visual character, differing from the rest of the structure and providing the building with an authentic and striking architectural look.

STRUCTURA CONCEPT

Designer Arh Jelena Samardžija



Project task **Design**
Type of building **Industrial facility**
Project timeline **2019**
Location **Zemun, Serbia**
Area **3000 m²**

Other is the manufacturing and storage sections with only a ground floor (central position, four-sided orientation with the longer side in the northwest-southeast direction). The structure was planned to be built in phases, with phase II leaning against the phase I manufacturing and storage unit with only a ground floor. The building had to be designed to provide a maximum size on the site, while positioning the free and green areas to support the functionality and the concept of movement of visitor and staff vehicles and servicing by public service and goods vehicles.

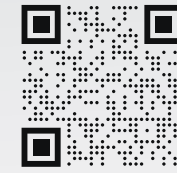
Tehnix



A multi-storey commercial building – a new formative and spatial contribution to Peke Dapcevic Street – was designed in the architectural milieu of the industrial zone and the complex in Kumodraz, its background consisting of a moulded iconography interspersed with sporadic folkloric elements. From a functional standpoint, it is organically and structurally connected to the existing main building on the site, emerging from a need to engage with the existing development potential of the site and raise it towards a new commercial and spatial value. Under the conditions of the saturated tissue of the site and the limiting parabola of the structural line, the building finds space through a vertical escape, resting against the existing, yet never completed underground garage. This design finally completes and activates the garage through new functionality – it becomes a warehouse, with the bulk of the new wing of the commercial facility rising above it.

► STRUCTURA CONCEPT

Designer Arh **Danijela Milojević**



Project task **Design**
Type of building **Office building**
Project timeline **2019**
Location **Belgrade, Serbia**
Area **3000 m²**

The Miesian architectural simplicity and geometrism put the glass membrane, interspersed with a metallic raster lattice, at the core of the artistic experience. With the discrete chromatic key of the membrane itself, incorporating the recognisable trademark colour of the investor's company, the building blends into a single organic unit with the existing main building. At the same time, the playful syncopating rhythm of the raster grid, the openings, and the interplay of full and glazed areas places the building in a counterpoint with its simple environment and imposes itself as the dominant point of the entire artistic view of the complex.

Our respectful

Clients





www.structuraconcept.com
office@structuraconcept.com

BELGRADE

Južni bulevar 84/23

NOVI SAD

Cara Dušana 32

SKOPJE

Blvd. Partizanski Odredi 15A/1-11

ZAGREB

Kneza Mislava 14

